

## Information Bulletin

### STUTTGART

---

Stuttgart is the capital and largest city of the German state of Baden-Württemberg and the sixth largest city in Germany.

Stuttgart's valley location with steeply rising slopes is unique. Surrounded by wooded hills, the city is open in the east to the Neckar and has a pleasant climate. Vineyards, parks, forests, and orchards cover more than half of the 11'000 hectares' large city and justify Stuttgart's reputation as one of the most beautifully located large cities of Europe.

### OFFICIAL SITE OF THE COMPETITION

---

Porsche Arena  
Mercedesstrasse 69  
70372 Stuttgart  
[www.hallenduo.de/de/home/porsche-arena/](http://www.hallenduo.de/de/home/porsche-arena/)

### TICKETING

---

The venue has a capacity of 6'200 seats.  
3 days' tickets packages can be purchased here:  
[www.easyticket.de/dauerkarten/dauerkarte/uci-hallenradsport-wm-2021](http://www.easyticket.de/dauerkarten/dauerkarte/uci-hallenradsport-wm-2021)

### ACCOMODATION

---

UCI Official Hotel:  
Kongresshotel Europe  
Siemensstrasse 26  
70469 Stuttgart  
Tel: +49 711 81004  
Fax: + 49 711 81004 2555  
E-Mail: [info.str@europe-hotels-int.de](mailto:info.str@europe-hotels-int.de)

### HOTEL BOOKING

---

Accommodation must be organised by the national teams.  
Bookings can be done via: [www.stuttgart-tourist.de](http://www.stuttgart-tourist.de)

### FOOD AND BEVERAGES

---

Food and drinks stalls will be available for athletes and spectators around the venue.

### TRANSPORTATION

---

Stuttgart International airport is located 13 km of Stuttgart city centre ([www.flughafen-stuttgart.de](http://www.flughafen-stuttgart.de)).

A full transport service can be provided between Stuttgart airport and hotels on arrival and departure (fee apply). The transport service will include the transportation of cycle equipment

All national teams should take care of their own transportation between the hotel and the competitions venue. For any information about hiring a vehicle, please address yourself directly to rental car agencies (e.g.: [www.europcar.com](http://www.europcar.com); [www.sixt.de](http://www.sixt.de); [www.hertz.de](http://www.hertz.de); etc.).

For information and/or airport transfer reservations, please contact the organising committee: [info@hallenradsport-wm-2021.de](mailto:info@hallenradsport-wm-2021.de).

**ACCREDITATION CENTRE & PERMANENCE**


---

Opening hours	Accreditation Centre	Permanence
Wednesday 27 October	14:00 – 21:00	14:00 – 21:00
Thursday 28 October	08:00 – 20:00	08:00 – 20:00
Friday 29 October	08:00 – 20:30	08:00 – 20:30
Saturday 30 October	<i>Accreditations can be picked up at the Permanence</i>	08:00 – 21:30
Sunday 31 October	<i>Accreditations can be picked up at the Permanence</i>	08:00 – 17:30

**PROGRAM AND TRAINING SESSIONS**


---

*(subject to modifications until all registration sheets have been submitted)*

Date	Training	Qualifications	Finals
Wednesday 27 October	16:00 – 24:00 <i>(open)</i>		
Thursday 28 October	08:00 – 22:30 <i>(according to schedule)</i>		
Friday 29 October	08:00 – 24:00 <i>(according to schedule)</i>	Cycle-ball Group A/B Single Woman ACT4 Open	ACT4 Open
Saturday 30 October	07:00 – 22:00 <i>(according to schedule)</i>	Single Man Cycle-ball Group A/B Pair Open	Pair Open Single Woman
Sunday 31 October	07:00 – 16:00 <i>(according to schedule)</i>	Pair Women Cycle-ball Group A	Pair Women Cycle-ball Group A Single Man

**OFFICIAL OPENING CEREMONY**


---

Friday 29 October                      18:30 – 19:00

**TECHNICAL MEETINGS**


---

The following meetings will take place in the Porsche Arena:

Thursday 28 October                      10:00 – 17:00    License check  
 Thursday 28 October                      16:00 – 17:00    Team managers' meeting  
 Thursday 28 October                      18:00 – 19:00    Commissaires' panel meeting

---

**COMMISSAIRES' PANEL**

---

**Artistic Cycling**

KERN, Marianne (SUI) – President  
FRITSCH, Sandra (AUT)  
RIETSCH, Véronique (FRA)  
SCHWEDT, Oliver (GER)  
BARTUNEK, Petr (CZE)  
LOU Weng Meng, Ivan (MAC)  
VON ROTZ-HERBST, Claudia (SUI)

**Cycle-ball**

BURES, Robert (SUI) – President  
LUBETZ, Simon (AUT)  
COVENT, Dimitri (BEL)  
FADRHONC, Michal (CZE)  
MEIER, Dr. Patrick (GER)  
OBERER, Mathias (SUI)

**TECHNICAL DELEGATE**

SCHNEIDER Hubert (AUT)

**IT REPRESENTATIVE**

DAUM Kurt-Jürgen (GER)

**DOPING CONTROL OFFICER**

LINKE Ingo-Sven (GER)

---

**GENERAL INFORMATION**

---

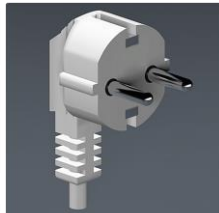
**Climate:** Moderate Atlantic European climate (average temperature in October between 8°C and 14°C)

**Jet lag:** UTC/GMT +1

**Voltage:** Europlug (220-240 volts)



Type C



Type F

**Currency:** Euro

---

**VISA**

---

Each National Federation/team is responsible to obtain the appropriate entry documentation for their delegation and to control that all passengers entering Germany are in possession of a valid passport.

---

**INSURANCE**

---

All participants (included but not limited to team officials, riders and their assistants) must bear their own responsibility for any injury, accident and/or lost that may occur during their stay in Germany while taking part in these championships. Participants should take up insurance before leaving their country to protect themselves against any loss and to indemnify themselves against any claims.

## REGISTRATIONS

---

*Only participants born in 2006 or earlier are entitled to participate.*

### Deadlines:

- National Federations: **30 August 2021**
- Athletes and officials: **11 October 2021**

**Registrations forms (National Federations, athletes, and officials) must be sent by e-mail to:**

Technical Delegate  
Hubert Schneider  
[hubert.schneider@vcon.at](mailto:hubert.schneider@vcon.at)

### AND

Indoor Cycling Coordinator  
Kim Woelke  
[indoor@uci.ch](mailto:indoor@uci.ch)

+ copy to [marco.rossmann@bdr-online.org](mailto:marco.rossmann@bdr-online.org)

**Evaluation sheets** for Artistic Cycling must be sent by e-mail, no later than 11 October 2021, to:

IT Representative  
Kurt-Jürgen Daum  
[WCC@hallenradsport-daum.de](mailto:WCC@hallenradsport-daum.de)

The points of the evaluation sheets cannot be higher than the planned points in the official entry form by name.

The points on the evaluation sheets cannot be lowered more than 7,5% of the planned points in the official entry form by name.

### ORGANISING COMMITTEE

OK Büro HallenradSPORT WM 2021  
c/o in Stuttgart Veranstaltungsgesellschaft mbH  
Mercedesstrasse 50  
70372 Stuttgart

Tel: +49 711 9554 3131  
E-Mail: [info@hallenradSPORT-wm-2021.de](mailto:info@hallenradSPORT-wm-2021.de)  
Website: [www.hallenrad-wm-2021.de](http://www.hallenrad-wm-2021.de)

### NATIONAL FEDERATION

Bund Deutscher Radfahrer e.V.  
z.Hd. Marco Rossmann  
Otto-Fleck-Schneise 4  
60528 Frankfurt/Main  
Germany

Tel: +49 (69) 967.80.00  
E-Mail: [marco.rossmann@bdr-online.org](mailto:marco.rossmann@bdr-online.org)  
Website: [www.rad-net.de](http://www.rad-net.de)

The UCI remains available for any further information. You can contact the UCI head office in Aigle, Mrs Kim Woelke, Indoor Cycling Coordinator, Tel +41 24 468 58 11, email: [indoor@uci.ch](mailto:indoor@uci.ch).